



2022

SBTi base year

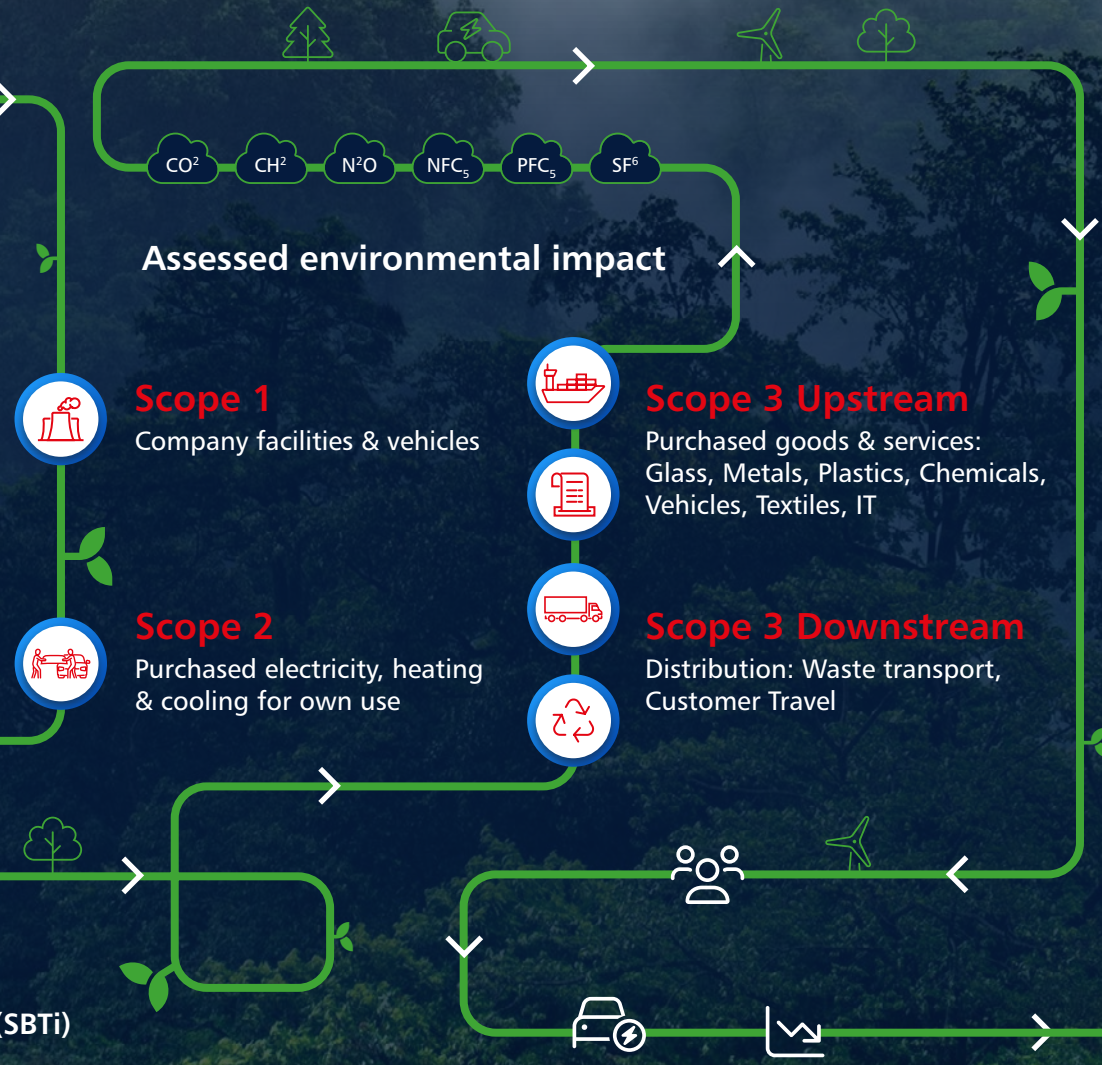
100%

of the replaced windscreen is sent to recycling

90%

of the windscreen material can be reused

Accountable according to the Science Based Targets Initiative (SBTi)



2030

Targeted emission reductions

SBTi near term target
(in line with 1.5-degree Paris agreement for 2030)

- Renewable fleet
- Renewable energy
- 40% Repair Rate
- Circular economy

Reduction areas for cutting carbon emissions



Download our latest sustainability report